



OPERATOR, MAINTENANCE & PARTS MANUAL

3-Point Linkage Log Splitter DP3PLS30T



70 SPITFIRE PLACE, RUTHERFORD NSW 2320
PO BOX 454, RUTHERFORD NSW 2320
T. 61 2 4932 3011 / SALES@SXM.COM.AU / WWW.SXM.COM.AU

SOUTHERN CROSS MOWERS PTY LTD
T/A SOUTHERN CROSS AG MACHINERY
ABN 54 062 931 775

LOG SPLITTER MANUAL V.0 / MAY 2025



TABLE OF CONTENTS

Introduction.....	01
Safety	
• Safety Instructions.....	02
• General Safety Guidelines.....	03
• Employer / Controller Responsibilities.....	04
• Supervision, Instruction and Training.....	04
• Inspection, Maintenance and Repair.....	04
• Service and Maintenance Safety.....	04
• Start-Up Safety.....	04
• Operation.....	04
• Operation Safety.....	05
• Personal Protective Equipment (PPE).....	05
• Storage and Transport.....	05
• Storage Safety.....	05
• Transport Safety.....	05
• Modifications.....	06
• Safety Signs.....	06
• Assembly Safety Instructions.....	06
• Prior to Operation	06
Assembly Instructions	06
Preparation	07
Starting and Stopping Safety.....	07
Transportation Safety.....	08
Attaching to Tractor.....	08
Training.....	09
Operation.....	10
Removing Log Splitter.....	11
Maintenance Safety.....	11
Maintenance.....	12
Storage Safety.....	12
Safety Decals.....	13
For Further Information.....	14
3-Pt Linkage Log Splitter Parts Diagram & List.....	15
Warranty & Register Your Warranty.....	16
Warranty Process.....	17

Manufacturers statement: Due to continuing improvements Southern Cross Ag Machinery Pty Ltd reserves the right to modify machinery design and specifications provided herein without any preliminary notice. Information provided herein is of descriptive nature.

**WARNING**

READ THE OPERATOR, MAINTENANCE AND PARTS MANUAL BEFORE USING THE 3-PT LINKAGE LOG SPLITTER.

INTRODUCTION

This manual contains valuable information about your new 3-Pt Linkage Log Splitter. It has been carefully prepared to give you helpful suggestions for operating, adjusting and servicing your 3-Pt Linkage Log Splitter. Keep this manual handy for frequent reference. All new operators or owners must review the manual before using the equipment and at least annually thereafter.

It is the owner's and/or operator's responsibility to;

- Read and understand the information contained in this manual.
- Operate, lubricate, assemble and maintain the equipment in accordance with all instructions and safety procedures in this manual.
- Inspect the equipment and replace or repair any parts that are damaged or worn which could cause damage, wear to other parts, or cause a safety hazard.

Please contact your Southern Cross Ag Machinery Dealer if you need any further assistance with your 3-Pt Linkage Log Splitter or additional copies of the manual. Visit our website www.sxm.com.au for a complete list of dealers in your area. You can also download additional copies of this manual from our website.

SAFETY

Safety Instructions

Southern Cross Ag Machinery encourages good safety practices. Good safety practices not only protect you but also the people around you. Please ensure that everyone using this equipment is familiar with the recommended operating and maintenance procedures, has read and understood the Operators Manual and follows all the safety precautions. Most accidents can be prevented. Do not risk serious injury or death by ignoring good safety practices.

The alert symbol is used throughout this manual and on the product safety decals. This symbol indicates attention is required and identifies hazards concerning your personal safety and the safety of others. Please follow the recommended precautions.



The safety alert symbol means...
ATTENTION! BECOME ALERT! YOUR SAFETY IS INVOLVED!



CAUTION

The Caution Symbol indicates a potentially hazardous situation that, if not avoided, may result in minor or moderate injury. It may also be used to alert against unsafe practices.



WARNING

The Warning Symbol indicates a potentially hazardous situation that, if not avoided, could result in death or serious injury and includes hazards that are exposed when guards are removed. It may also be used to alert against unsafe practices.



DANGER

The Danger Symbol indicates an imminently hazardous situation that, if not avoided will result in death or serious injury. This signal word is to be limited to the most extreme situations, typically for machine components that, for functional purposes, cannot be guarded.

SAFETY continued

General Safety Guidelines

- Have a first-aid kit available for use and know how to use it.
- Have a fire extinguisher available, stored in a highly visible location and know how to use it.
- Wear appropriate protective gear. This list may include but is not limited to:
 - hard hat
 - protective shoes with slip resistant soles and steel caps
 - protective glasses or goggles
 - heavy gloves
 - wet weather gear
 - hearing protection
 - respirator or filter mask
- Read and understand the Operator's Manual and all safety decals before operating, servicing, adjusting, repairing or hitching the equipment.
- Do not attempt any unauthorised modifications to your Southern Cross Ag Machinery product as this could affect function or safety and could affect the life of the equipment.
- Never start or operate the 3-Pt Linkage Log Splitter except from the operator's station on the power unit.
- Inspect and clean the working area before operating. Remove all obstructions such as rocks, stumps and wire.
- Keep hands, feet, clothing, and hair away from moving parts.
- Ensure bystanders are clear of the area before operating. A minimum distance of 100 metres should be kept from all bystanders when 3-Pt Linkage Log Splitter is in operation.
- Never operate this equipment while using alcoholic beverages or drugs that can hinder alertness or coordination. Consult your doctor about operating this machine while taking any medication.
- Under no circumstances should children under the age of 18 be allowed to work with or around this equipment. Do not allow anyone to operate or assemble this equipment until they have read and understood this manual.
- This equipment is dangerous to anyone unfamiliar with its operation. The operator should be responsible, properly qualified and physically able person familiar with farm machinery and competent in this equipment's operation.
- All new operators or owners must review the manual before using the equipment and at least annually thereafter.
- Keep anti-fall protection in place. If anti-fall protection removal becomes necessary for repairs, reinstall prior to use.
- Replace any safety decal that is not legible or is missing. The locations of such safety decals are indicated in this manual.
- Never exceed the limits of a piece of machinery. If its ability to do a job, or to do so safely, is in question – DON'T TRY IT.
- In addition to the design of this implement, safety decals and safety equipment, accident prevention is dependent upon the awareness, common sense, forethoughts, and proper training of everyone involved in the operation, transport, maintenance and storage of the machine. Also refer to safety messages and operating instructions in each of the appropriate sections of the tractor manual. Pay close attention to the safety decals affixed to the tractor and the 3-Pt Linkage Log Splitter.

SAFETY continued

Employer/Controller Responsibilities

OH&S legislation places obligations on the employer, or the controller of the 3-Pt Linkage Log Splitter, to identify the hazards and control the risks associated with the use of the 3-Pt Linkage Log Splitter in their workplace and to do so in accordance with the manufacturer's instructions.

When purchasing a 3-Pt Linkage Log Splitter:

- Ensure the manufacturer's instructions are provided at the point of purchase.
- Ensure the 3-Pt Linkage Log Splitter conforms to industry safety standards.
- Discuss your needs with the supplier, to ensure the 3-Pt Linkage Log Splitter is appropriate for the intended application – consider the tractor's hydraulic flow rate and the compatibility with the log splitter.
- Seek practical advice and instruction from the supplier on the use and limitations of the 3-Pt Linkage Log Splitter. If you are hiring, leasing or borrowing a 3-Pt Linkage Log Splitter on a temporary basis, get safe use instructions from the person supplying it.
- The employer must provide safety instructions to all those involved in using a 3-Pt Linkage Log Splitter.
- A copy of safety instructions must be kept in good condition with the 3-Pt Linkage Log Splitter.
- Generally, the safety instructions should be the manufacturer's instructions. Any variations from the manufacturer's instructions must be based on a risk assessment and must not remove any of the safety features nor expose anyone to risks.

Supervision, Instruction and Training

The employer must provide safe systems of work, adequate supervision, instruction and training to all those involved in using a 3-Pt Linkage Log Splitter. They must be instructed in the safe operation of the 3-Pt Linkage Log Splitter, including hazards specific to the workplace, including the terrain, stability of the tractor, working environment and the like. The employer should ensure that everyone achieves a level of understanding that enables them to safely and competently operate the 3-Pt Linkage Log Splitter.

Inspection, Maintenance and Repair

- All problems identified must be rectified, prior to use.
- Replacement parts must be to the original manufacturer's specifications or their equivalent.
- Safety signs and decals should be legible, maintained and where necessary replaced.
- Repairs should be carried out by a competent person.

Service and Maintenance Safety

Please contact your local authorised dealer for repairs and or servicing.

List of authorised dealers can be found on the dealer page of our website www.sxm.com.au.

Start-up Safety

- Do not let inexperienced operators or children use this equipment.
- Place all tractor and machine controls in neutral before starting.
- Operate only with Roll Over Protective System (ROPS) and seat belt equipped tractors.
- Do not operate inside a building unless there is adequate ventilation.
- Ensure all shields are in place and in good condition before operating.

Operation

Prior to use, the 3-Pt Linkage Log Splitter should be inspected to ensure it is working correctly. All safety features must be included in this inspection. If any safety feature is not working correctly, the 3-Pt Linkage Log Splitter must not be used. The 3-Pt Linkage Log Splitter must be operated according to the manufacturer's instructions.

The operator must ensure that no-one is exposed to risks arising from the splitting operation.

SAFETY continued

Operation Safety

- Do not permit riders.
- Do not wear loose fitting clothing during operation.
- Turn off tractor and remove key before working on Log Splitter.
- Before you operate the Log Splitter, check all pins, bolts and connections to be sure all are securely in place.
- Never operate the equipment in the raised position. Splitter must be positioned in level ground.
- Never place yourself between the tractor and Log Splitter while implement is in operation.
- Do not walk or work under a raised Log Splitter or attachment unless it is securely blocked or held in position. Do not depend on the tractor hydraulic system to hold the digger or attachment in place.
- A heavy load can cause instability of the tractor. Use extreme care during travel. Slow down on turns and watch out for bumps. The tractor may need front counter-weights to counter-balance the weight of the Log Splitter.
- Do not operate Log Splitter on steep hillsides. Must be operated on even level ground.
- Look for loose fasteners, worn or broken parts, pinched hydraulic hoses, and leaky or loose fittings. Make sure all pins have cotter pins and washers. Serious injury may occur from not maintaining this machine in good working order.
- Worn edges on splitting wedge can seriously effect splitting operation. Check for wear before each use, replace as necessary.

Personal Protective Equipment (PPE)

Prior to use, a risk assessment must be undertaken to determine the appropriate PPE required. Any identified PPE must be provided by the employer and must be used by those involved in the operation and maintenance of the 3-Pt Linkage Log Splitter. Examples of PPE are appropriate footwear and hearing & eye protection.

Storage and Transport

Requirements may differ when transporting a 3-Pt Linkage Log Splitter within a property and on a public road – you must comply with all statutory requirements. Always comply with all state and local lighting requirements when transporting on highways. Be sure the safety triangle is not blocked by the Log Splitter when transporting.

Storage Safety

- Store the unit in an area away from human activity.
- Do not permit children to play on or around the stored machine.

Transport Safety

- Review Transport Safety instructions in tractor manual before moving.
- Check with local authorities regarding transport on public roads. Obey all applicable laws and regulations.
- Make sure the SMV (Slow Moving Vehicle) emblem and all the lights and reflectors that are required by the local highway and transport authorities are in place, are clean, and can be seen clearly by all overtaking and oncoming traffic.
- Never have the equipment in operation during transport.
- Always travel at a safe speed.
- Turn curves or go up or down hills only at a low speed and at a gradual steering angle. Make certain that at least 20% of the tractor's weight is on the front wheels to maintain safe steering. Slow down on rough or uneven surfaces, and loose gravel.
- Use extreme care and maintain minimum ground speed when transporting on hillside, over rough ground and when operating close to ditches or fences. Be careful when turning sharp corners.



SAFETY continued

Modifications

A 3-Pt Linkage Log Splitter should not be modified or altered, any modifications made will void Warranty.

Safety Signs

- Keep all safety signs clean and legible and replace any that are damaged or missing.

ASSEMBLY SAFETY INSTRUCTIONS

WARNING! Do not reach or place yourself under the equipment.

CAUTION! For safety, turn off the tractor before attaching the Log Splitter. Remove the key to prevent the possibility of someone else starting the tractor.

PRIOR TO OPERATION

- Check over all pins, bolts and connections to be sure all are securely in place.
- Nuts and bolts should be snugged with wrenches; cotter pins should be in place and bent over or flared out with pliers.
- Replace any safety shields that may have been removed during installation.

ASSEMBLY INSTRUCTIONS

STEP 1

Remove log splitter components from steel crate and unwrap plastic protective wrap.

STEP 2

Assemble log splitter as per diagram on page 15. Tighten the flat and spring washers and nyloc nuts.

PREPARATION



Never operate the tractor and 3-Pt Linkage Log Splitter until you have read and completely understand this manual, the Tractor Operator's Manual and each of the messages found on the safety decals on the tractor and 3-Pt Linkage Log Splitter.

Personal protection equipment including hard hat, safety glasses, safety shoes, hearing protection and gloves are required during assembly, installation, operation, adjustment, maintenance, repairing, removal, or moving the implement. Do not wear loose fitting clothing or jewellery and be sure to contain long hair around equipment.

PROLONGED EXPOSURE TO LOUD NOISE MAY CAUSE PERMANENT HEARING LOSS! Tractors with or without 3-Pt Linkage Log Splitters attached can often create enough noise to cause permanent hearing loss. We recommend that you use hearing protection at all times. Long-term exposure to noise levels over 80db can cause severe hearing loss.

NOTE: Hearing loss from loud noises (from tractors, chain-saws, radios, and other sources close to the ear) is cumulative over a lifetime, with no chance of natural recovery.

Always wear your seat belt. Serious injury or even death could result from falling off the tractor particularly during a rollover when the operator could be trapped under the ROPS or the tractor.

Operate only in daylight.

Ensure 3-Pt Linkage Log Splitter is properly mounted, adjusted and in good operating condition.

Make sure Log Splitter is on a flat, dry, solid ground before operating.

Always operate this machine from the operator zone(s).

Logs should be cut with square ends prior to splitting.

Ensure that all safety guards and safety decals are properly installed and in good condition.

STARTING AND STOPPING SAFETY

The use of this equipment is susceptible to certain hazards that cannot be protected against by mechanical means or product design. All operators of this equipment must read and understand this entire manual, paying particular attention to safety and operating instructions, prior to using.

Most accidents occur because of neglect or carelessness. When machine is operated in populated areas where thrown objects could injure persons or property, operation must be stopped if anyone comes nearby.

Install and secure all guards and shields before starting or operating. The tractor guards should be used and maintained in good working condition. Worn items must be replaced at once to reduce the possibility of injury.

Always stop the tractor, lower implement to the ground, set park brake, shut off the tractor engine and remove the ignition key before dismounting tractor. Never leave equipment unattended while the tractor is running.

Never place hands or feet under 3-Pt Linkage Log Splitter. Stay clear of all moving parts.

Do not reach or place any part of your body under the equipment until it is blocked securely.

Do not allow riders on the 3-Pt Linkage Log Splitter or tractor at any time. There is no safe place for riders.

Never operate tractor and 3-Pt Linkage Log Splitter under trees with low hanging limbs.

Stop 3-Pt Linkage Log Splitter and tractor immediately upon striking an obstruction. Turn engine off, remove key, engage park brake then inspect and repair any damage before resuming operation.

Stay alert for uneven terrain, holes, roots and other hidden hazards. Keep away from drop-offs and hazards that could cause roll-over. Use extreme caution and maintain minimum ground speed when transporting on hillsides, over rough ground and when travelling close to ditches or fences. Be careful and slow down when turning sharp corners and changing direction on slopes. Do not start or stop suddenly on slopes. In extremely uneven terrain, rear wheel weights, front tractor weights and / or tire ballast should be used to improve stability.

TRANSPORT SAFETY



Always observe state and local laws governing highway safety and the travel of farm machinery on public roads.

When driving the tractor and equipment on roads or highways use flashing amber warning lights and a slow moving vehicle (SMV) identification emblem. Do not exceed 20kph. Reduce speed on rough roads and surfaces.

Plan your route to avoid heavy traffic.

Always install transport locks, pins or brackets before transporting.

Do not drink and drive.

Be a safe and courteous driver. Always yield to oncoming traffic in all circumstances, including narrow bridges, intersections etc. Watch for traffic when crossing or operating in close proximity to roadways.

Use extreme care and maintain minimum ground speed when transporting close to ditches and or fences. Be careful when turning sharp corners.

Never allow riders on either tractor or 3-Pt Linkage Log Splitter.

ATTACHING TO TRACTOR



WARNING

Never stand between tractor and 3-Pt Linkage Log Splitter while backing the tractor up to the hitch

STEP 1

Attach to tractor's three point hitch as described in the Tractor's Operator's Manual.

STEP 2

Ensure tractor hydraulic pressure is relieved, connect hydraulic hoses to tractor auxiliary ports. Operate tractor auxiliary remote lever into free flow position test operation of Log Splitter using control valve located on the Log Splitter. If Log Splitter does not function, turn tractor off, relieve tractor hydraulic pressure and swap hoses and re-test as above.

TRAINING

1. Read, understand, and follow all instructions on the machine and in the manual(s) before attempting to assemble and operate. Keep this manual in a safe place for future and regular reference and for ordering replacement parts.
2. Be familiar with all controls and their proper operation. Know how to stop the machine and disengage them quickly.
3. Never allow children under 18 years of age to operate this machine.
4. Never allow adults to operate this machine without proper instruction.
5. Many accidents occur when more than one person operates the machine. If a helper is assisting in stacking logs, never activate the control until the helper is a minimum of 3 metres from the machine.
6. Keep bystanders, pets, and children at least 3 metres from the machine while it is in operation.
7. Never allow anyone to ride on this machine.
8. Never transport cargo on this machine.
9. Hydraulic log splitters develop high fluid pressures during operation. Fluid escaping through a pin hole opening can penetrate your skin and cause blood poisoning, gangrene, or death. Give attention to the following instructions at all times:
 - a. Do not check for leaks with your hand.
 - b. Do not operate machine with frayed, kinked, cracked, or damaged hoses, fittings, or tubing.
 - c. Stop the engine and relieve hydraulic system pressure by cycling the valve control lever on the tractor from forward to reverse several times while engine is not running; returning to neutral before repairing or adjusting fittings, hoses, tubing, or other system components.
 - d. Do not adjust the pressure settings of the pump or valve.
10. If injured by escaping fluid, see a doctor immediately. Serious infection or reaction can develop if proper medical treatment is not administered immediately.
12. Keep the operator zone and adjacent area clear for safe, secure footing.
13. This machine should be used for splitting wood only, do not use it for any other purpose.
14. Follow the instructions in the manual(s) provided with any attachment(s) for this machine.

OPERATION

1. Before starting this machine, review the “Safety Instructions” in this manual page 02-06. Failure to follow these rules may result in serious injury to the operator or bystanders.
2. Never leave this splitter unattended with the tractor engine running.
3. Do not operate splitter while under the influence of alcohol, drugs, or medication.
4. Never allow anyone to operate this splitter without proper instruction.
5. Always operate this splitter with all safety equipment in place and working. Make sure all controls are operating properly for safe operation.
6. Operator Zone
 - a. Horizontal Operating Position: Stand on the control lever side of the log splitter and stabilise log.
 - b. Vertical Operating Position: Stand in front of the log splitter and stabilise log.



WARNING! When stabilising log with left hand, remove your hand when the wedge just contacts the log or serious injury may occur.

7. When loading a log, always place your hands on the side of the log, not on the ends, and never use your foot to help stabilise a log. Failure to do so, may result in crushed or amputated fingers, toes, hand, or foot.
8. Use only your right hand to operate the controls.
9. Never attempt to split more than one log at a time.
10. For logs which are not cut square, the least square end of the log should be placed toward the beam and wedge, and the square end placed toward the end plate.
11. When splitting in the vertical position, stabilise the log before moving the control handle. Split as follows:
 - a. Place log on the end plate and turn until it leans against the beam and is stable.
 - b. When splitting extra large or uneven logs, the log must be stabilised with wooden shims or split wood placed between the log and end plate or ground.
12. Always keep fingers away from any cracks that open in the log while splitting. They can quickly close and pinch or amputate your fingers.
13. Keep your work area clean. Immediately remove split wood around the machine so you do not stumble over it.

REMOVING LOG SPLITTER



Read all safety warnings and precautions on pages XX and XX of the manual, as well as the specific safety precautions below:

WARNING

Turn off the tractor, apply hand brake and remove the key, relieve tractor hydraulic pressure before removing the Log Splitter.

STEP 1

To remove the Log Splitter from the tractor, relieve tractor hydraulics, disconnect the hydraulic hoses from the tractor.

STEP 2

Remove Log Splitter from tractor linkage pins.

MAINTENANCE SAFETY

Good maintenance is your responsibility.

- Follow good shop practices
- Keep service area clean and dry.
- Be sure electrical outlets and tools are properly grounded.
- Use adequate light for the job at hand.

Make sure there is ample ventilation. Never operate tractor engine in a closed building. The exhaust fumes may cause asphyxiation.

Always use personal protection devices such as eye, hand and hearing protectors when performing any service or maintenance.

Frequently tighten all bolts, nuts, screws and check to make certain unit is safe to operate. Cotter pins should be in place and bent over or flared out with pliers.

Where replacement parts are necessary for periodic maintenance and servicing, factory replacement parts must be used to restore your equipment to original specifications. Contact your local dealer or Southern Cross Ag Machinery regarding supply or replacement parts.

The manufacturer and / or distributor will not be responsible for injuries or damages caused by the use of unapproved parts and or accessories.

A first aid kit should be kept readily accessible while performing maintenance on this equipment.



MAINTENANCE

1. Stop the engine and relieve hydraulic system pressure by cycling the valve control lever from forward to reverse several times while tractor engine is not running; returning to neutral before repairing or adjusting fittings, hoses, tubing, or other system components.
2. Periodically check that all nuts and bolts, hose clamps, and hydraulic fittings are tight to be sure equipment is in safe working condition.
3. Check all safety guards and shields to be sure they are in the proper position. Never operate with safety guards, shields, or other protective features removed.
4. The pressure relief valve is preset at the factory. Do not adjust the valve.
5. For your safety, replace all damaged or worn parts immediately with original equipment manufacturer's parts only. Use of parts which do not meet the original equipment specifications may lead to improper performance and compromise safety, it will also void warranty.
6. Do not alter this machine in any manner, alterations such as attaching a rope or extension to the control handle, or adding to the width or height of the wedge may result in personal injury and will void warranty.

STORAGE SAFETY

Store the unit in an area away from human activity.

Do not park equipment where it can be exposed to direct contact with livestock for long periods of time. Damage to 3-Pt Linkage Log Splitter and or livestock could result. Make sure all parked machines are on a hard, level surface and that all safety devices are engaged.

SAFETY DECALS

The safety decals are shown on the illustration below. Good safety requires that you familiarize yourself with the various safety decals, the type of warning and the area or specific function related to that area that requires your SAFETY AWARENESS.



REMEMBER: If the safety decals have been removed or damaged new safety decals must be applied. Please contact Southern Cross Ag Machinery or your local dealer if you require new decals.



FOR FURTHER INFORMATION

WorkCover NSW

Visit www.workcover.nsw.gov.au

Call the WorkCover Assistance Service on **13 10 50**

Call the WorkCover Publications Hotline on **1300 799 003**

Visit your nearest WorkCover office.

For technical specifications on 3-Pt Linkage Log Splitters, contact your local manufacturer.

SafeWork South Australia

GPO Box 465

Adelaide SA 5001

Help Centre: **1300 365 255**

Website: www.safework.sa.gov.au

Workplace Health and Safety Queensland, Department of Justice and Attorney-General

GPO Box 69

Brisbane QLD 4001

Workplace health and safety infoline: **1300 369 915**

Electrical Safety infoline: **1300 650 622**

Website: www.worksafe.qld.gov.au

WorkSafe Victoria

Advisory Service 222

Exhibition Street

Melbourne VIC 3000

Telephone: **03 9641 1444**

Toll free: **1800 136 089**

Email: info@worksafe.vic.gov.au

Website: www.worksafe.vic.gov.au

WorkSafe Western Australia

1260 Hay Street

West Perth WA 6005

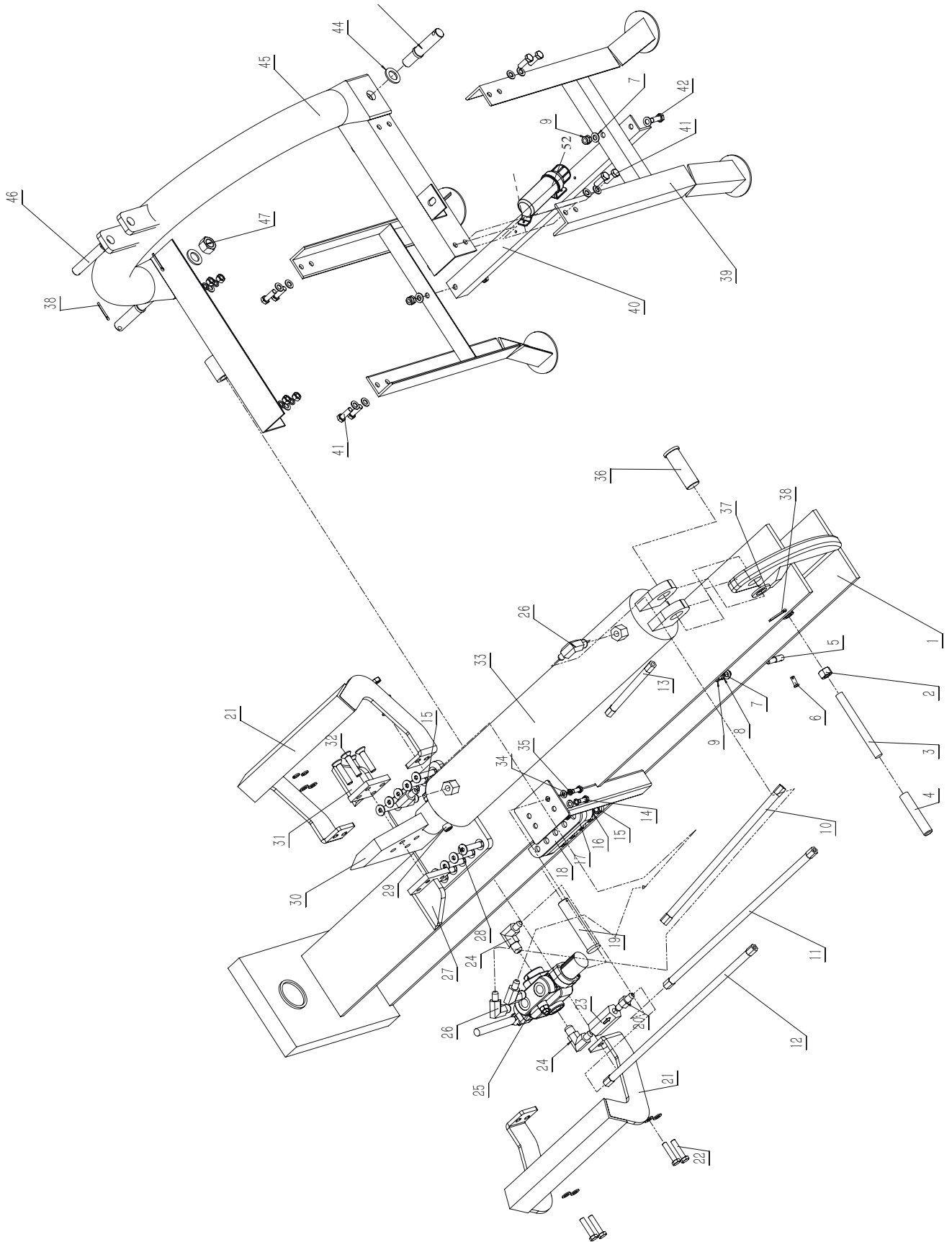
Telephone: **08 9327 8777**

Toll Free: **1300 307 877**

Email: safety@commerce.wa.gov.au

Website: www.worksafe.wa.gov.au

LOG SPLITTER PARTS DIAGRAM



LOG SPLITTER PARTS LIST

ITEM NO.	QTY	DESCRIPTION
1	1	"I" Beam
2	1	Nut
3	1	Lift Rod
4	1	Grip
5	1	Stub Pin
6	1	Lynch Pin
7	1	Washer
8	1	Spring Washer
9	1	Nut
10	1	Hydraulic Hose
11	1	Hydraulic Hose
12	1	Hydraulic Hose
13	4	Bolt
14	1	Hydraulic Hose
15	10	Nut
16	10	Washer
17	1	Bottom Wedge Spacer
18	1	Bottom Wedge Plate
19	1	Pivot Pin
20	1	Hydraulic Fitting
21	2	Anti Fall Prevesion
22	4	Washer
23	4	Bolt
24	1	Non Return Valve
25	1	Hydraulic Fitting
26	1	Hydraulic Control Valve
27	1	Hydraulic Fitting
28	1	LH Cross Wedge
29	10	Bolt
30	1	Nut
31	1	Wedge Assembly
32	1	RH Cross Wedge
33	4	Bolt
34	1	Bolt
35	1	Hydraulic Cylinder
36	1	Hydraulic Fitting
37	1	Cylinder Pin
38	1	Washer
39	1	Split Pin

LOG SPLITTER PARTS LIST continued

ITEM NO.	QTY	DESCRIPTION
40	1	LH Stand
41	1	Centre Brace
42	8	Bolt
43	2	Bolt
44	2	Nut
45	2	Washer
46	2	Lower Link Pin
47	2	Washer
48	1	3PT Linkage Frame
49	1	Top Link Pin
50	2	Lynch Pin
51	2	Nut
52	1	Manual Holder



WARRANTY

Southern Cross Ag Machinery warrants all their products against defective workmanship and, or materials for a period of twelve (12) months from the date of purchase. A three-year extended warranty program applies to gearboxes supplied with the following products; 3-Pt Linkage Log Splitters, finishing mowers and post-hole diggers sold from June 25th 2009. For attachments used in commercial enterprises the Warranty period is six (6) months on all components with the exception of components that are not included as per the detailed listed in the next paragraph. Proof of purchase plus proof of the defect will be required and must be received by Southern Cross Ag Machinery within seven days of product failure and prior to the end of the twelve (12) month period from date of purchase. A *Warranty Claim Form* MUST be lodged through the Dealer where the item was purchased. A *Warranty Claim Number* will be issued. Work commenced without a Claim Number issued and therefore warranty approval will not be covered by Southern Cross Ag Machinery.

Southern Cross Ag Machinery takes no responsibility for the repair of any products rendered defective or damaged through normal wear and tear or incorrect use of the product. Southern Cross Ag Machinery does not provide warranty on any cutting blades, tilling / hoe blades, rippers, scarifiers, tynes, tyres, clutch plates, friction plates, V-belts and 3-Pt Linkage Log Splitter cutting bits. Southern Cross Ag Machinery does not provide warranty on any products that have undergone modification. Southern Cross Ag Machinery reserves the right to determine whether the product is defective. Southern Cross Ag Machinery does not accept responsibility for any product which is damaged in transit. Faulty parts may need to be returned to Southern Cross Ag Machinery as part of the Warranty process. Freight costs each way will be paid by the owner / purchaser of the product.

Purchasers, dealers or agents of the Southern Cross Ag Machinery product are not authorised to give warranty on behalf of Southern Cross Ag Machinery. Claims will only be recognised, if lodged as outlined on page 29 in the *Warranty Process*. Any work commenced without Southern Cross Ag Machinery approval will not be honoured.

Product specifications are subject to change due to our company's policy of improvement. Design changes and improvements maybe made by Southern Cross Ag Machinery when ever it believes the effectiveness of its products can be improved. Southern Cross Ag Machinery has no obligation to incorporate any improvements to products, which are currently in service or have been supplied.

REGISTER YOUR WARRANTY

To register your Warranty please ensure the dealer from where the product has been purchased completes the *Southern Cross Ag Machinery Installation / Warranty Registration* Form. This triplet document needs to be signed by the purchaser. One copy remains with the Dealer, one copy needs to be mailed to Southern Cross Ag Machinery (PO Box 454, Rutherford NSW 2320) and one copy will remain with the purchaser for your reference.

If you have any queries regarding the warranty of your Southern Cross Ag Machinery product please call our office Tel. (02) 4932 3011 or email sales@sxm.com.au.

WARRANTY PROCESS

1. Contact your dealer or point of purchase who will contact Southern Cross Ag Machinery.
2. Photos and or video footage may be required to process your claim with a short description of the problem. This will be lodged through your dealer or point of purchase by the completion of the Southern Cross Ag Machinery *Warranty Claim Form*.
3. The claim will be assessed by Southern Cross Ag Machinery to determine whether the warranty claim will be approved. This can take up to five working days from when Southern Cross Ag Machinery is first notified of the problem and proof of product failure along with *Warranty Claim Form* is supplied.
4. If the *Warranty Claim* is approved a *Warranty Claim Number* will be issued to the Dealer.
5. Any work commenced without approval from Southern Cross Ag Machinery and without a *Warranty Claim Number* will not be covered by Warranty. Repairs must be made by Southern Cross Ag Machinery or an authorised dealer. Southern Cross Ag Machinery reserves the exclusive right to determine whether it will pay labour costs for warranty repairs or replacements and the amount of such costs that it will pay and the time in which the repairs will be made. Southern Cross Ag Machinery will not approve invoices sent for repairs that Southern Cross Ag Machinery has not previously approved.
6. Travel and freight charges associated with the processing of the Warranty Claim will not be covered by the Southern Cross Ag Machinery Warranty and is the responsibility of the owner / purchaser.

DISCLAIMER

Whilst information is true at time of printing actual product may differ slightly from the product described herein due to our company's policy of improvement. Errors and omissions may happen from time to time, we apologise for any inconvenience should this occur. Products may differ slightly in appearance to illustrations / photographs provided.

SOUTHERN CROSS AG MACHINERY
70 SPITFIRE PLACE, RUTHERFORD NSW 2320
PO BOX 454. RUTHERFORD NSW 2320

T. **02 4932 3011**

WWW.SXM.COM.AU

AUTHORISED SXM DEALER

